

12 Foot Davis and Adjacent Sites

Peace River, Alberta

Proposed Concept Design

Presentation and Discussion

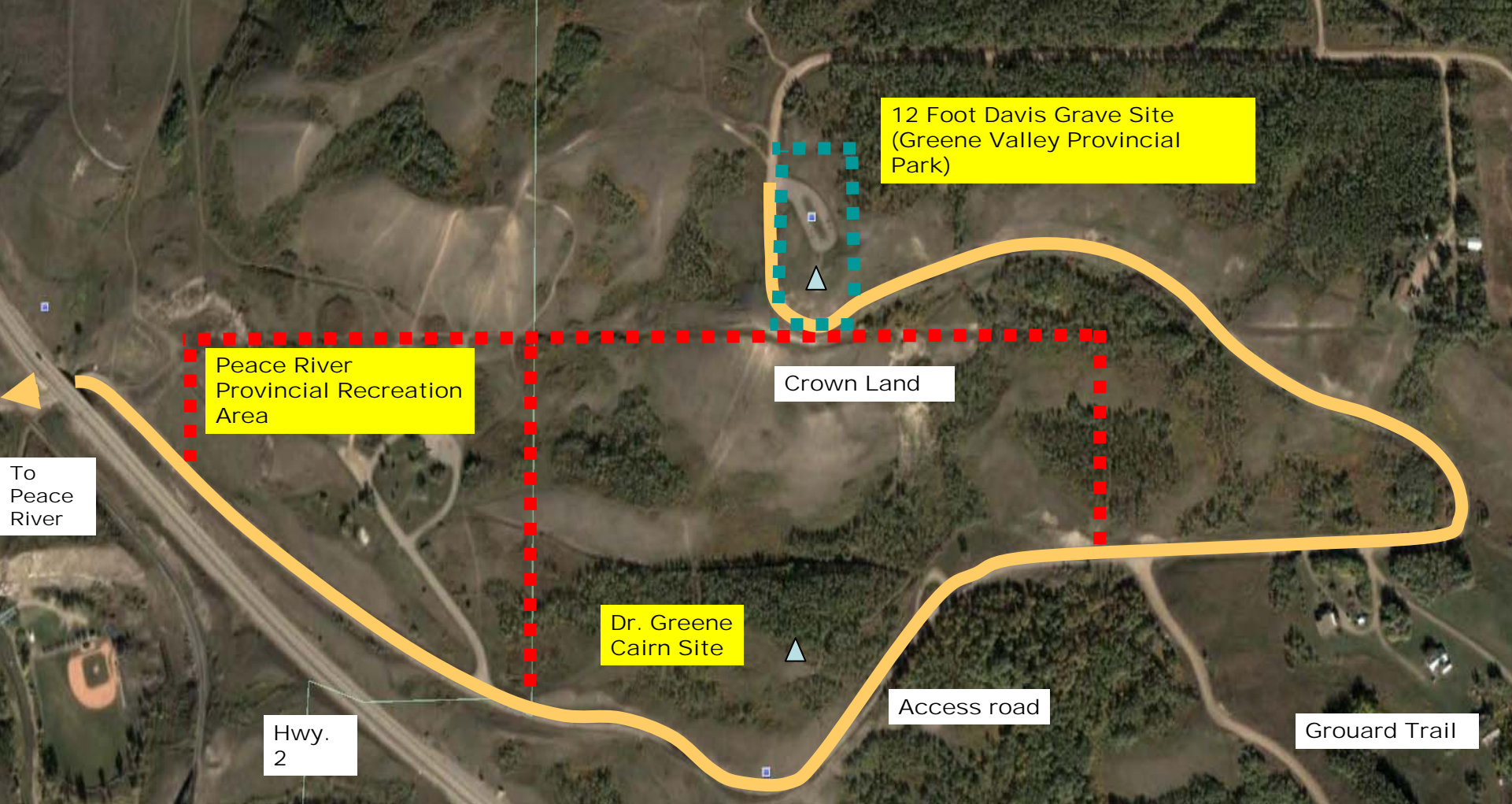
January 26, 2010

Government of Alberta ■



North Environments
Landscape Architects Ltd.





Objectives

Create conceptual upgrading plans for the 12 Foot Davis Grave Site, the Dr. Greene Cairn Site and the Peace River Provincial Recreation Area (PRA).

Enhance direction finding to the sites from Peace River and Highway 2.

Enhance the connection between the 12 Foot Davis statue at Riverfront Park and the grave site.

12 Foot Davis and
Adjacent Sites
Peace River , Alberta

Conceptual Overview



The grave marker and view beyond

Existing Qualities

Open, unobstructed views

Uncluttered – Stonehenge like

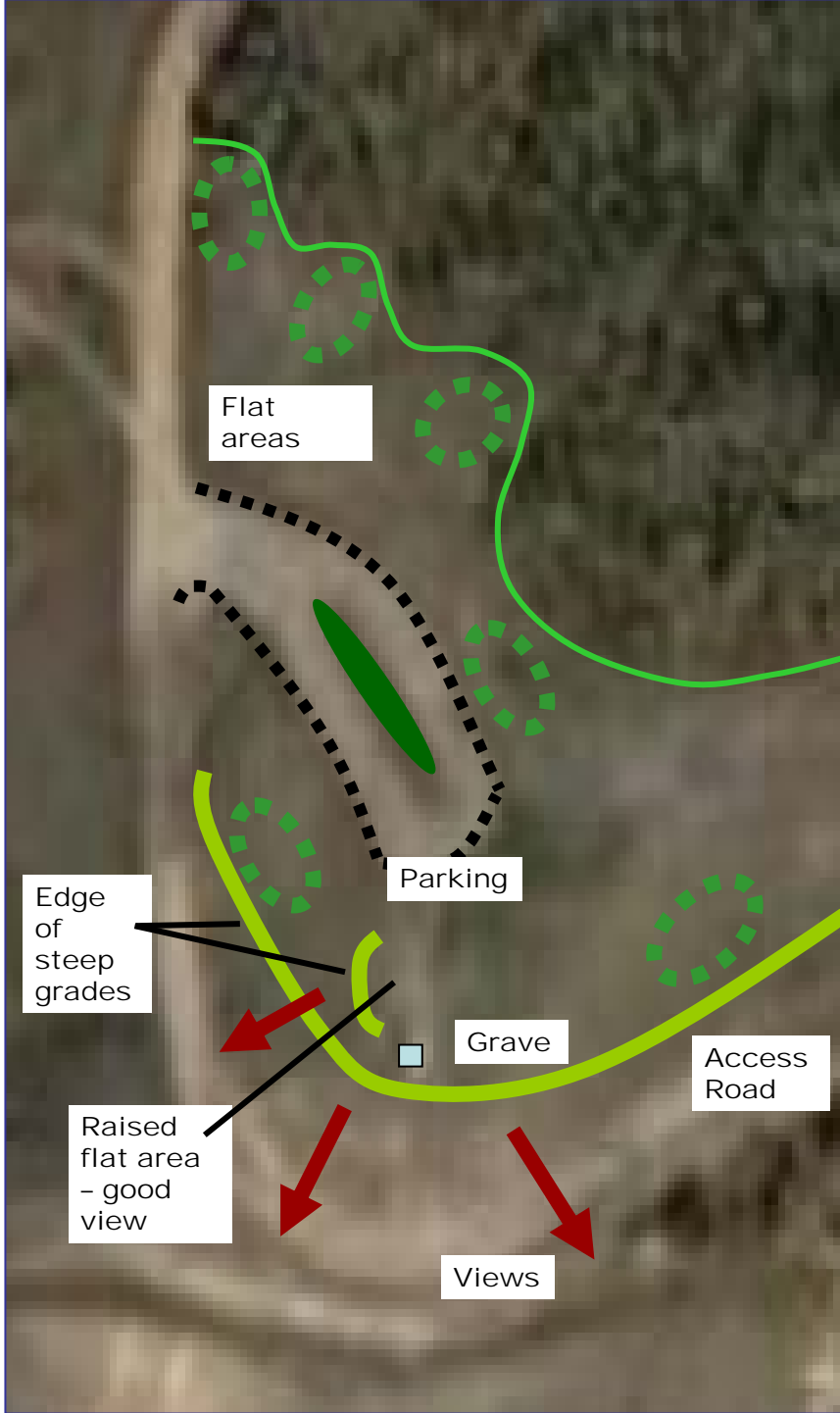
Respectful of gravesite but not representative of one

Minimal interpretive information

No facilities (benches etc.)

12 Foot Davis and
Adjacent Sites
Peace River , Alberta

*12 Foot Davis
Site Analysis*



Notes

The area requires general upgrading and facilities such as benches.

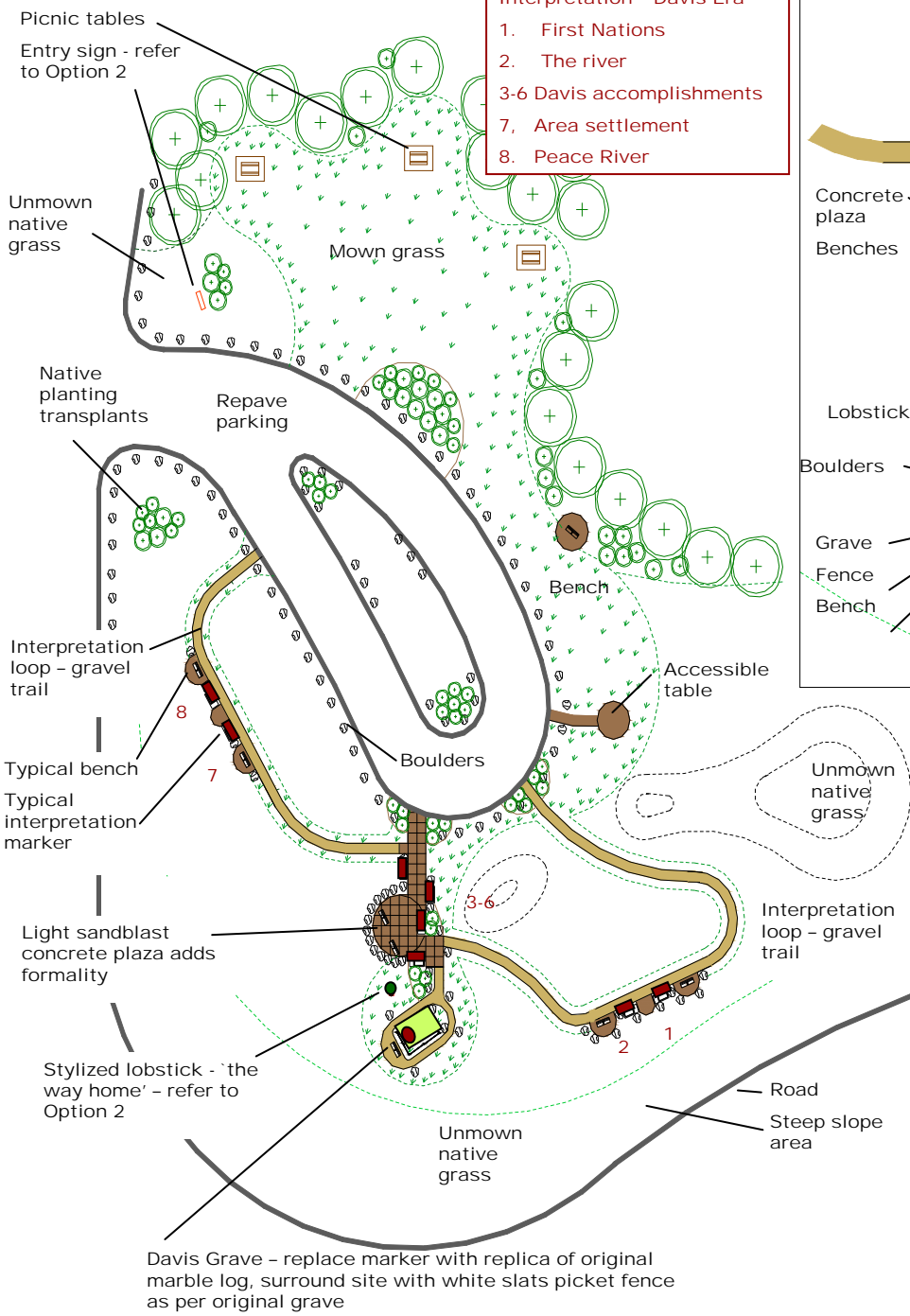
There is a raised flat area to the northwest of the grave marker that presents an excellent view of the river. It provides an opportunity to create a public area somewhat separate from the grave.

The grave should be treated with respect. One way to do this is to separate it slightly from the main sitting and interpretation facilities.

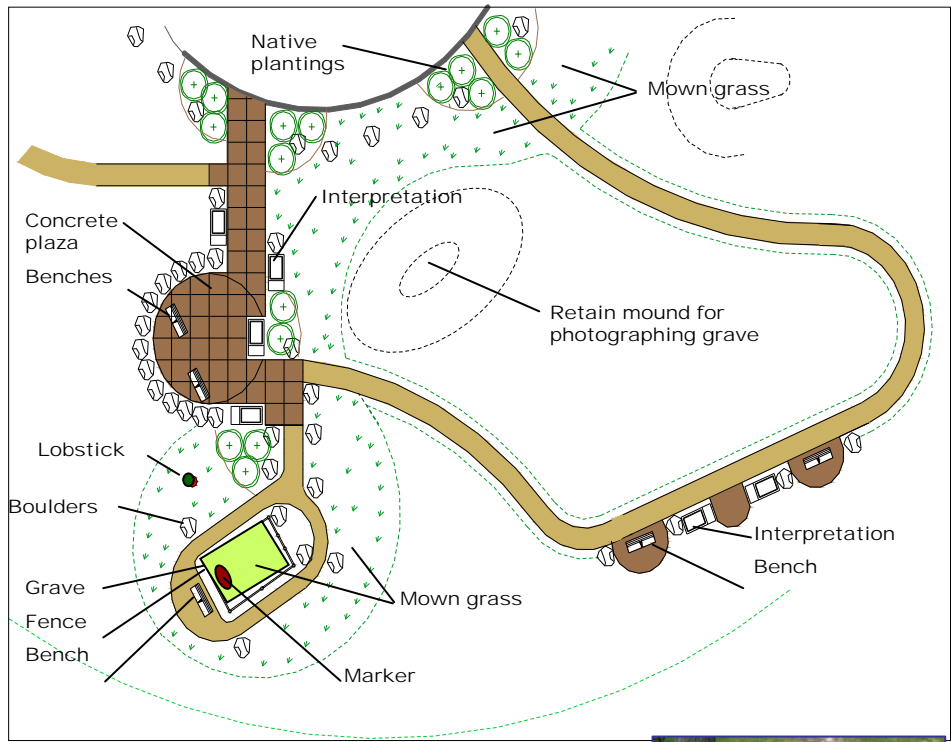
12 Foot Davis and Adjacent Sites

Peace River , Alberta

12 Foot Davis Site Analysis



- Interpretation - Davis Era**
1. First Nations
 2. The river
 - 3-6 Davis accomplishments
 7. Area settlement
 8. Peace River



CONCEPT

Retain uncluttered open 'top of the world' character by keeping features low.

A small concrete plaza adds formality. Ensure grave remains separate from this public area. Plaza is on edge of a steeper slope presenting a good view.

Upgrade grave by replacing marker and adding a white slat picket fence. Oversize slightly to ensure visibility from Riverside Park.

Stylized lobstick indicates the 'way home' for Davis and current Peace River population.

Interpret the Davis era as it pertains to the river, fur trade etc.

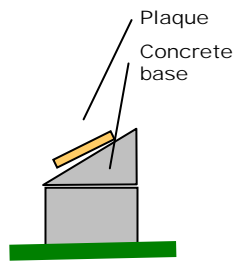
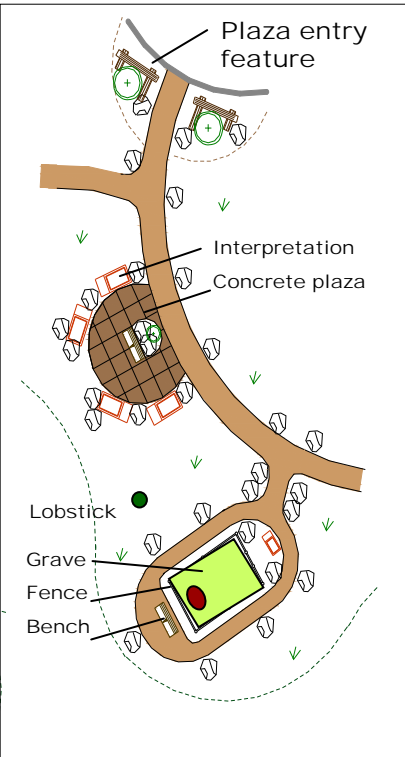
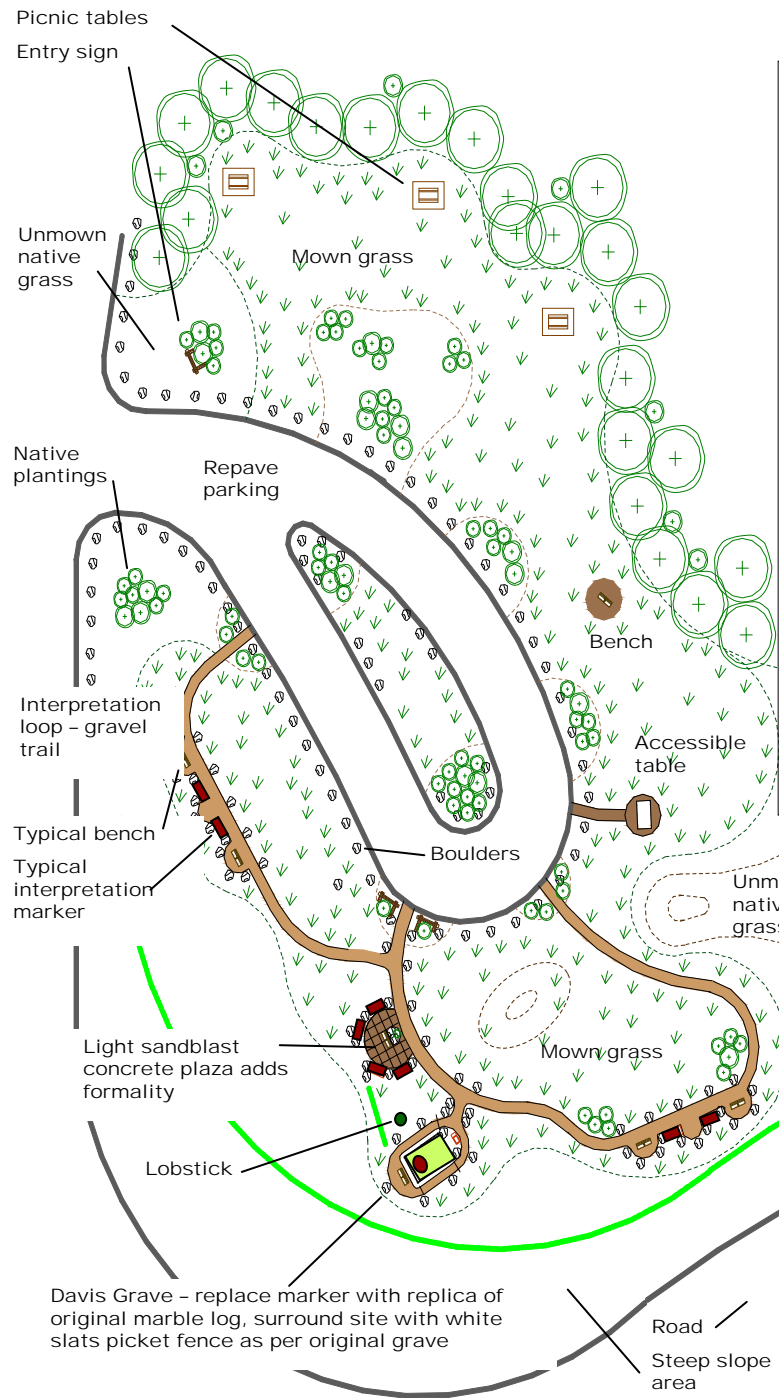
Mow only selected areas to provide a sculptural element to mown area. Transplant a limited number of native plantings to define areas.



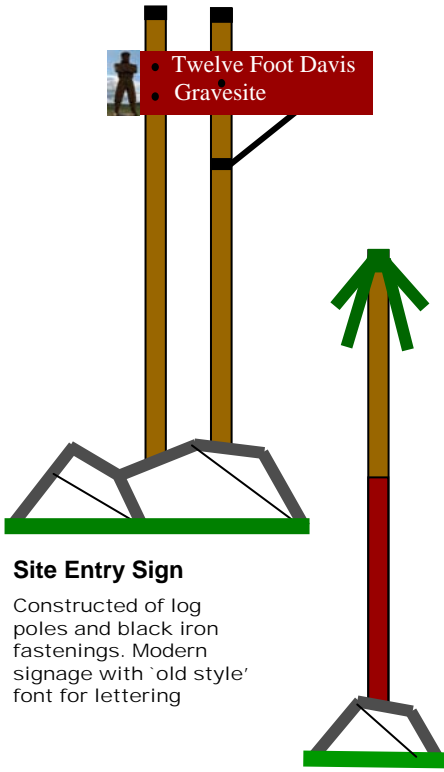
Interpretation example- low/simple

12 Foot Davis and Adjacent Sites
Peace River, Alberta

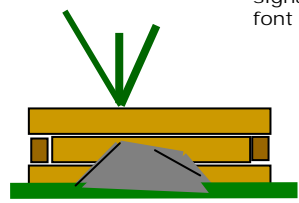
Conceptual 12 Foot Davis Site - Option



Interpretation
Low and unobtrusive



Site Entry Sign
Constructed of log poles and black iron fastenings. Modern signage with 'old style' font for lettering



Plaza Entry Feature
Rough hewn timbers/boulders

Stylized Lobstick
A lobstick was used along rivers to provide direction to travellers. It was a coniferous tree with lower limbs removed

CONCEPT

- As per Option 1 except:
1. More mown grass area - closer to present condition.
 2. Entry plaza less formal with concrete only for the plaza. Entry structures emphasize the plaza entry.

12 Foot Davis and Adjacent Sites
Peace River, Alberta

*Conceptual
12 Foot Davis Site
Option 2*



Historic Imagery (Peace River Museum)

Suggestion

Remove the existing marker and relocate to the museum if possible.

Restore imagery of a grave site.

Install a replica of the original carved stump marble monument and enclose it within a white picket fence. (use metal and powdercoat for durability)

Construct the fence slightly larger (taller, wider) than historic to ensure visibility from Riverfront Park

Separate grave site slightly from benches and interpretive features.

Consider installation of a symbolic 'Lobstick' ... showing the way home. Install slightly separated from grave site.

The existing grave marker and the original.

12 Foot Davis and Adjacent Sites
Peace River , Alberta

Grave Marker Options
12 Foot Davis Site



Entry Trail

The gravel trail is in good condition – some pruning back of the brush and addition of gravel would make it more inviting. It would be a good area to interpret the flora/fauna of the area.



Entry Area

The area requires greater visibility from the road and a more defined entryway.

12 Foot Davis and
Adjacent Sites
Peace River , Alberta

*Dr. Greene Cairn
Site Analysis*



The area between stairs and monument would benefit from creating a flat area with a bench and interpretive signage. Interpret the accomplishments of Dr. Greene. A low black steel rail fence would add prominence and tie in visually to the stairs.

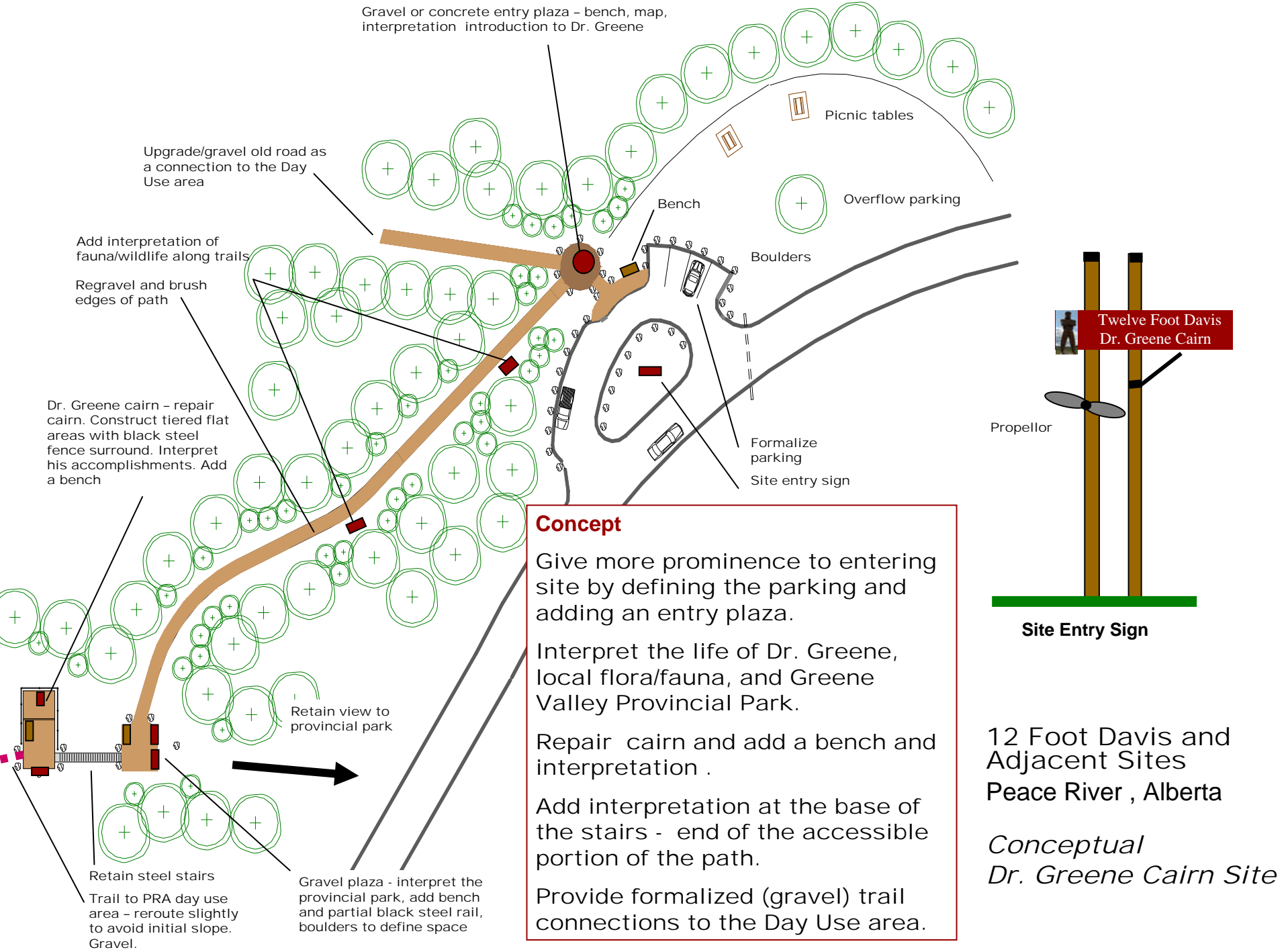


The stairs are somewhat visually out of place but they serve their purpose.

An interpretation area at the base of the stairs would take advantage of a flat area and serve to visually anchor the stairs.

12 Foot Davis and
Adjacent Sites
Peace River , Alberta

*Dr. Greene Cairn
Site Analysis*



Informal ATV trails are damaging the slopes

Parking - poorly defined

Parking - poorly defined

Lower flat area - old shelter foundation



Central Area

In the foreground is poorly defined parking area that could be used for picnic activities. In background is the sloped central grass area. It would be more useable if a portion was terraced to create a flat area



Lower flat area

This area had a shelter at one time and would have been the centre of day use activities because of the shelter and it's flatness.

Provincial Recreation Area (PRA) - Day Use Area

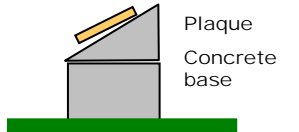
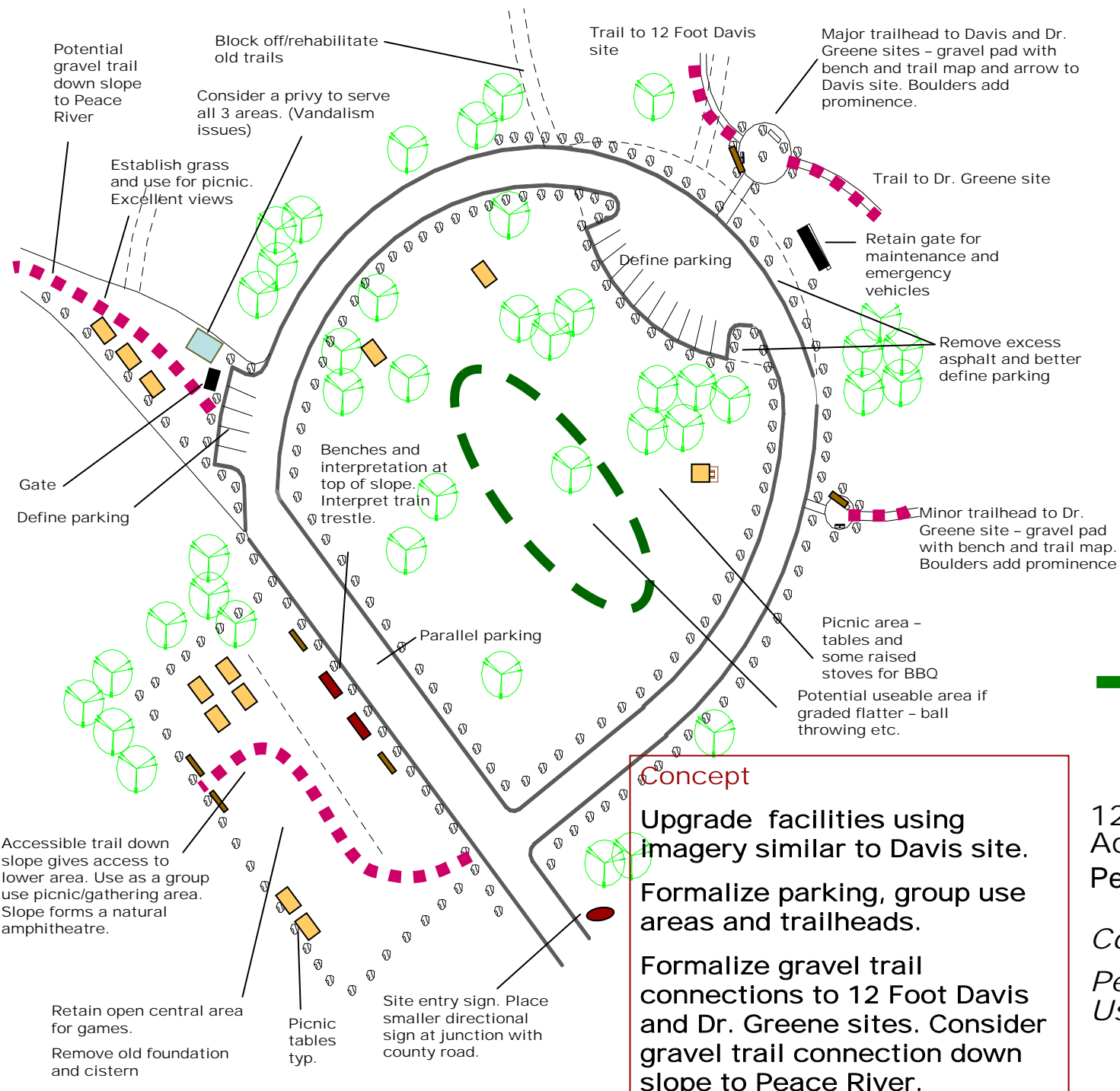
An attractive area presenting nice views. It has lost most of its day use facilities (shelter/tables/fire pits etc.) over time.

It does not present the commanding views of the Davis site but does overlook the town and the railway trestle.

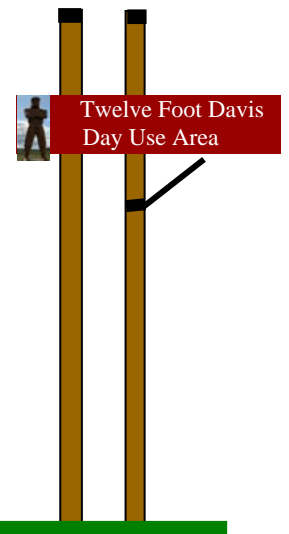
It requires overall upgrading and better definition of parking areas.

12 Foot Davis and
Adjacent Sites
Peace River , Alberta

*Peace River PRA
Analysis*



Interpretation (low and durable)



Site Entry Sign

Concept






Upgrade facilities using imagery similar to Davis site.

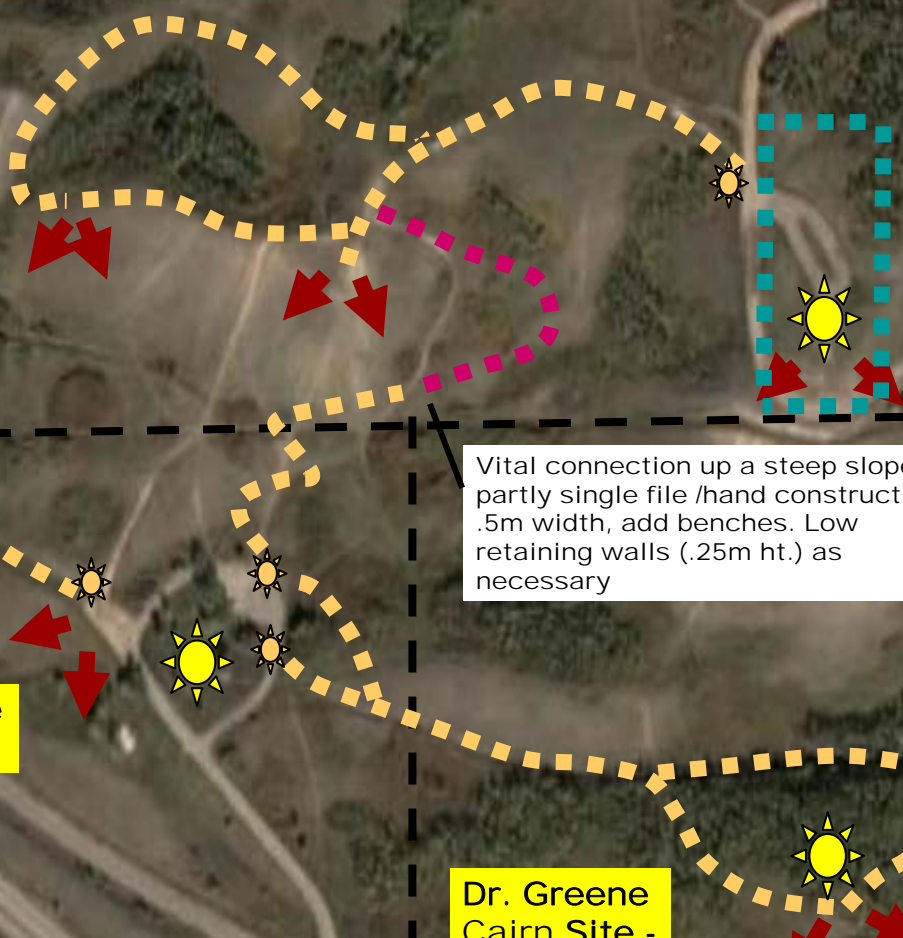
Formalize parking, group use areas and trailheads.

Formalize gravel trail connections to 12 Foot Davis and Dr. Greene sites. Consider gravel trail connection down slope to Peace River.

12 Foot Davis and Adjacent Sites
Peace River , Alberta

*Conceptual
Peace River PRA Day Use Area*

-  Views
-  1.5m gravel trail
-  Single file 0.5m width
-  Existing Main Attractions
-  Entry node - trail map, bench



**12 Foot Davis
Grave Site -
upgrade**

Vital connection up a steep slope -
partly single file /hand construct to
.5m width, add benches. Low
retaining walls (.25m ht.) as
necessary

**PRA - day use
area upgrade**

**Dr. Greene
Cairn Site -
upgrade**

Steep slope - single file
trail/hand construct to
.5m width, add
benches. Low retaining
walls (.25m ht.) as
necessary

12 Foot Davis and
Adjacent Sites
Peace River , Alberta

Concept
Upgrade the 12 foot Davis Gravesite, the PRA day use facilities and Dr. Greene Cairn site and provide walking connections between the sites.

Conceptual
Trail Connections



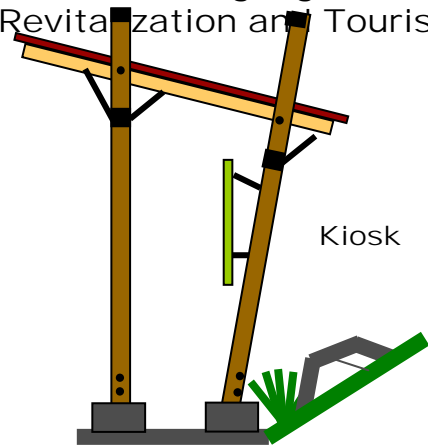
For travellers who do not stop - at each pulloff, install a large sign listing attractions. This sign would introduce area attractions and the signage imagery used in town.

For travellers who stop - install an information kiosk with information on each site, a map, and a handout brochure.

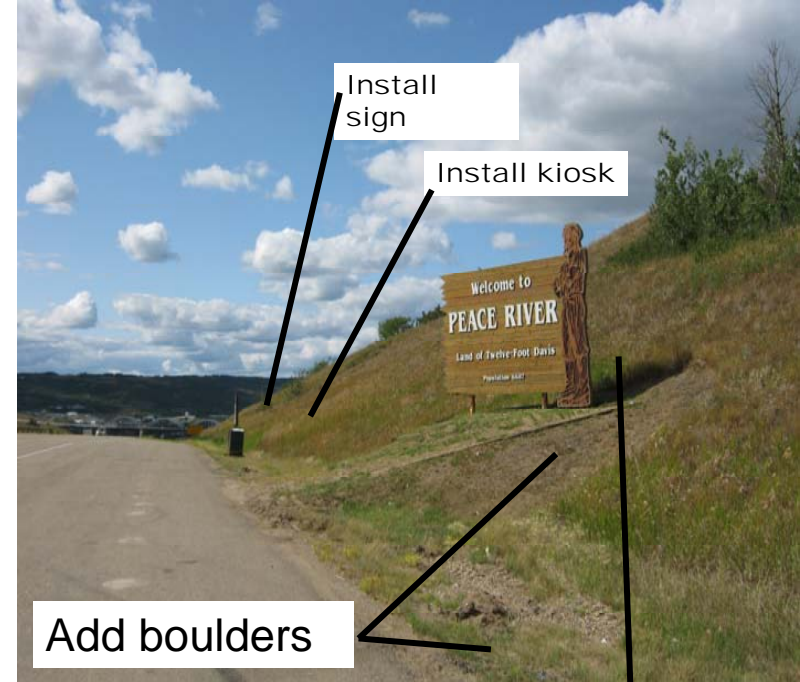
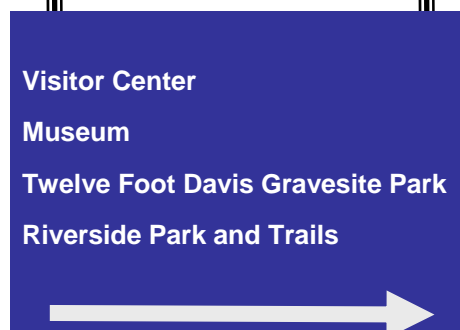
Improve aesthetics of each pulloff as it reflects on attractions in Peace River - add boulders/native planting

At highway turnoffs into Peace River - work with Alberta Transportation to install typical Area Attraction signs.

Coordinate signage with Downtown Peace River Revitalization and Tourism Plan.



Alberta
Transportation - Area
Attraction Sign

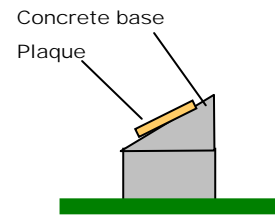


Add plantings

For directional purposes - suggest the name 12 Foot Davis Grave Site Park to encompass the grave site, the PRA day use area and Dr. Greene Cairn sites and the areas between. It need not be a singular legal entity.

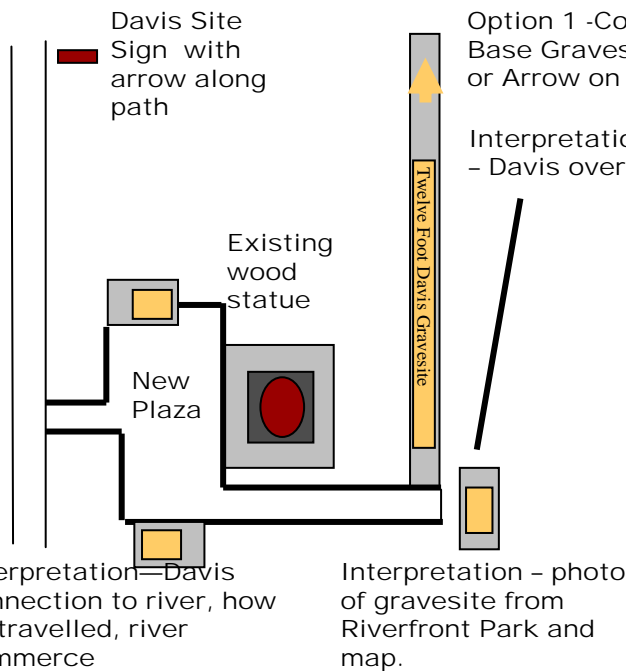
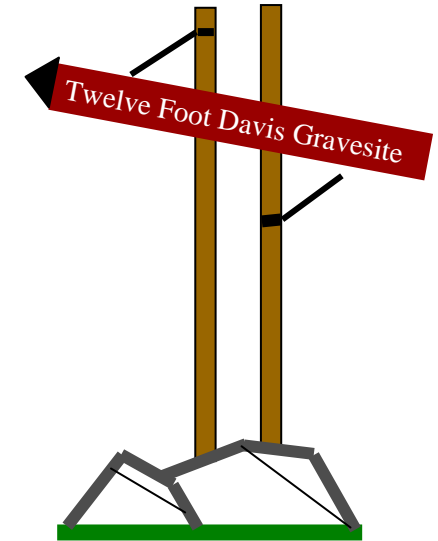
12 Foot Davis and Adjacent Sites
Peace River , Alberta

Conceptual
Directions - from Highway
Pulloffs



Option 1 - Sideview Concrete Base Gravesite Arrow, with Bronze or Black Iron Arrow to Gravesite

Wood sign and posts, black iron arrow and boulders surrounding base



Option 1 -Concrete Base Gravesite Arrow or Arrow on Posts
Interpretation Panels - Davis overview

Increase the importance of Davis at Riverfront Park by adding interpretation. Add an arrow pointing to gravesite on the hill as well as a map showing route.
Add directional signage starting from the statue at the park and continuing along the roads to the hilltop gravesite. Coordinate with Downtown Peace River Revitalization and Tourism Study.

12 Foot Davis and Adjacent Sites
Peace River , Alberta

Conceptual Riverfront Park - 12 Foot Davis Statue